



# VACUUM GENERATOR

## R-781-□



Modular Vacuum Generator

Turn Vacuum on/off

**Features:**

- Micro gap construction - snap action and no blow by

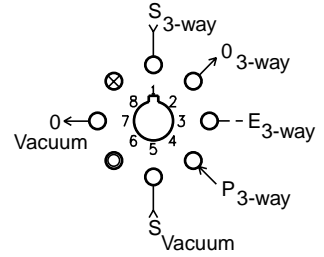
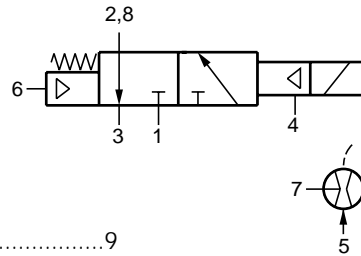
**Performance:**

**3-Way Valve**

Flow (SCFM @ 100 psig).....	9
Pilot pressure (psig) minimum.....	20
Temperature.....	32° to 180° F
Working pressure.....	0 to 150

**Vacuum Generator**

Vacuum (in. Hg @ 60 psig).....	25
Vacuum flow (scfm @ 60 psig).....	0.6
Air consumption (scfm @ 60 psig).....	1.7
Temperature.....	32° to 180° F
Available voltage.....	6, 12, 24 VDC



Voltage.....	R-781-6	6 VDC
	R-781-12	12 VDC
	R-781-24	24 VDC

Power consumption.....0.65 W @ rated voltage  
Duty.....Continuous duty to 150% of rated voltage

**Description:**

R-781 is a combination venturi vacuum generator and an independent pilot actuated electronically controlled, spring return, fully ported 3-way valve. Applying pressure at port 5 creates a vacuum at port 7. The 3-way valve can be used to turn the vacuum generator on or off or it can be used to switch the vacuum on or off. To shift the 3-way valve 40 psig is required at port 4 along with the appropriate DC voltage being applied to the solenoid.

## R-782-□



Modular Vacuum Generator

**Features:**

- Micro gap construction - snap action and no blow by

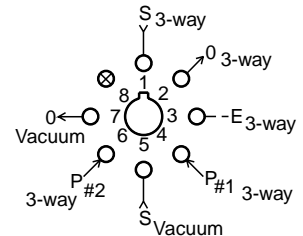
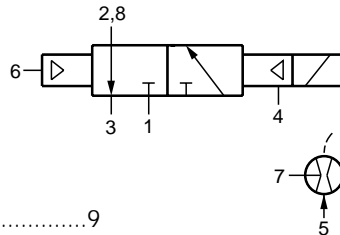
**Performance:**

**3-Way Valve**

Flow (SCFM @ 100 psig).....	9
Pilot pressure (psig) minimum.....	20
Temperature.....	32° to 180° F
Working pressure.....	0 to 150

**Vacuum Generator**

Vacuum (in. Hg @ 60 psig).....	25
Vacuum flow (scfm @ 60 psig).....	0.6
Air consumption (scfm @ 60 psig).....	1.7
Temperature.....	32° to 180° F
Available voltage.....	6, 12, 24 VDC



Voltage.....	R-782-6	6 VDC
	R-782-12	12 VDC
	R-782-24	24 VDC

Power consumption.....0.65 W @ rated voltage  
Duty.....Continuous duty to 150% of rated voltage

**Description:**

The R-782 is a combination venturi vacuum generator and an independent pilot actuated electronically controlled, air pilot return, fully ported 3-way valve. Applying pressure at port 5 creates a vacuum at port 7. The 3-way valve can be used to turn the vacuum generator on or off or it can be used to switch the vacuum on or off. To shift the 3-way valve 20 psig is required at port 4 along with the appropriate DC voltage being applied to the solenoid. To return the valve a pilot pressure of 20 psig is required at port 6.